



Women of World War II

‘Rosie the Riveter’

Additional WWII Information



Maj. Maria D. Hernandez

- Born in Tepic, Nayarit, Mexico - 1906
- U.S. Army Nurse Corps
- U.S. Air Force
- WW II Victory Medal, European-African-Middle Eastern Campaign Medal, Good Conduct Medal
- Endowed \$1 Million to California State University, Fullerton - 1997
- Career: USAF/Nurse/Real Estate Investor





T/Sgt Doris L. Zavala

- Born in Lorain, Ohio
- U.S. Women's Army Corps
- 8225 WAC Battalion Far East Command
- Ft. Des Moines, Iowa & Tokyo, Japan
- WW II Victory Medal, Occupation Medal,
Good Conduct Medal
- Career: Lucky Stores, Accounting – 30 Yrs.





The 'We Can Do It' poster was produced by Artist J. Howard Miller for the Westinghouse Electric & Manufacturing Company as a work-incentive. Although only briefly displayed, it later emerged as one of the most iconic images for female empowerment during WW II.



"Rosita la Remachadora" ("Rosie the Riveter")



Esther A. Bablot Agredano

‘Rosie the Riveter’

Los Angeles Lockheed Aircraft, 1942-1974
P-38s, Hudson Bomber, F1011, Rockets,
Prototype Instrument Panel





Julia Perez Aguirre

“Rosie Riveter”
Douglas Aircraft
Long Beach, CA





Juana Zaragoza Alvarez “Jennie”

“Rosie Riveter” - Los Angeles, CA

Plant # 2, 1943-46: P-38 Fighter Plane.

Worked at Burbank Lockheed plant on 1st Jet Aircraft
(Three ‘Rosie Riveter’ Sisters)





Virginia Garcia Elias

WW II Rosie Riveter
Long Beach Shipyards





Carmen Zaragoza Gonzales

“Rosie Riveter” - Los Angeles, CA
Lockheed Plant # 2,
1943-44: P-38 Fighter Plan
(Three ‘Rosie Riveter’ Sisters)



Estella Zaragoza Hernandez

“Rosie Riveter” at Avion Plant at
Garfield High School
(Three ‘Rosie Riveter’ Sisters)





Alejandrina Armendariz

“Rosie Riveter” - Los Angeles
Lockheed Plant for 17 Years



Elvira Armendariz De Godoy

Performed In Musical Entertainment, Singing & Dancing At U.S.O. Hospitals & Military Bases.

Also played in Orchestra for
“War Bond” Awareness.



“The Broadway Orpheum Circuit”



Elvira A. De Godoy (L) performing for U.S.O. - affiliated programs

“The Eastside Little Symphony Orchestra”



Elvira A. De Godoy (Front Row, 5th From Left), under the direction of Mr. Ernest Katz, to promote war bonds in Los Angeles, CA.

Avion “Rosie Riveters” At Garfield High School



Estella Zaragoza Hernandez (standing, 2nd from left) a “Rosie Riveter” at Avion Plant at Garfield High School, Los Angeles, CA

Avion “Rosie Riveters” At Garfield High School, Los Angeles, CA



Esther Salazar Arambula & Sister, Naomi Salazar Gonzales, Garfield High School,
after-school aircraft-making plant



Amalia Sanchez Carpenter

“Rosie Riveter” at Airplane Plant
Los Angeles, CA
(Three “Rosie Riveter” Sisters)





Angelica Sanchez Medel

“Rosie Riveter” at Airplane Plant,
Los Angeles, CA
(Three “Rosie Riveter” Sisters)





Antonia Sanchez Mehl

“Rosie Riveter” At Airplane Plant,
in Los Angeles, CA
(Three “Rosie Riveter” Sisters)





Inez Urtusuastegui De La Rocha

Company inspector of auxillary gas tanks
on wings of P-38 Fighters
Gillespie Defense Plant, Los Angeles, CA





Hortense Diaz

Hortense Diaz, “Rosie Riveter”,
with Husband, Agapito Diaz, at
The Palladium, Hollywood, 1943.
Hortense worked at the Douglas Aircraft,
Long Beach, CA





Rosa Lozano Flores

“Rosie Riveter” At Lockheed Aircraft,
7th & Santa Fe Ave., Los Angeles, CA
Assembling P-38 Fighter Planes



The Garcia Sisters



Elsie G. Beaubien (L), Tillie G. Vigil (Top), Ercy M. Garcia (C) Doris G. Childers (2nd R),
Josephine M. Garcia (R)
Cobusco Defense Plant Denver, CO



Trinidad Seja Grajeda

Rosie Riveter Douglas Aircraft
Long Beach, CA





Linda Hernandez Menchaca

“Rosie the Riveter”
on The Queen Mary’s Conversion
into a troop transport ship



Carmen Fontes Mendoza

“Rosie Riveter” at Lockheed,
Los Angeles, CA

making P-38s & B-29s (1941-42);
Norris Thermador, making shell casings
& large guns (1944-45)





Sara Aguirre Miranda

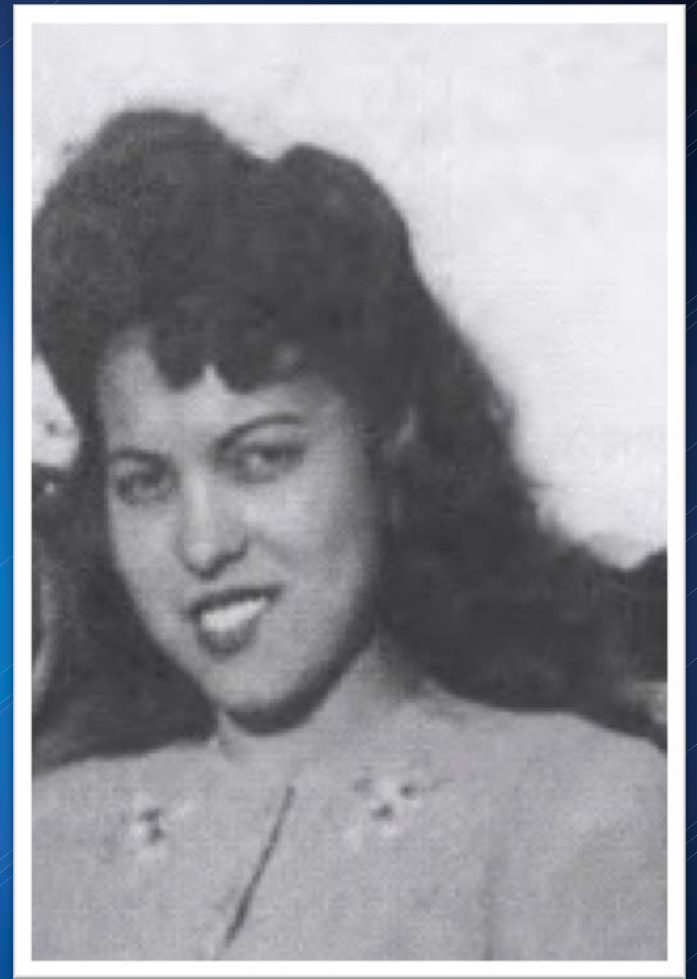
“Rosie Riveter”
Vultee Aircraft
Downey, Ca





Ruth L. Moreno

“Rosie Riveter”
Consolidated Vultee Aircraft
Tucson, AZ



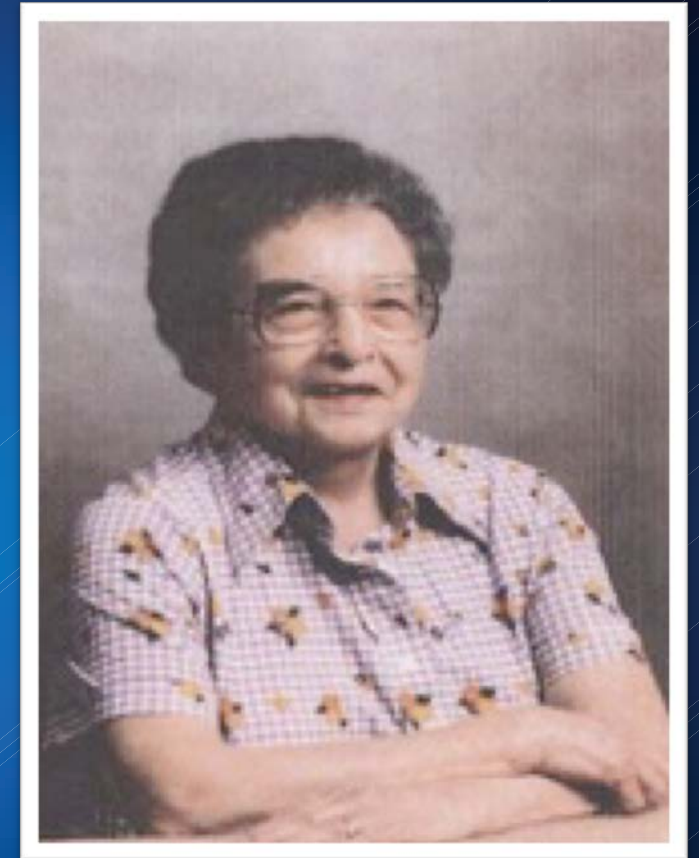


Ramona Navarro Ramirez

“Rosie Riveter”

Rohr Aircraft Division - 36 Years

San Diego, CA

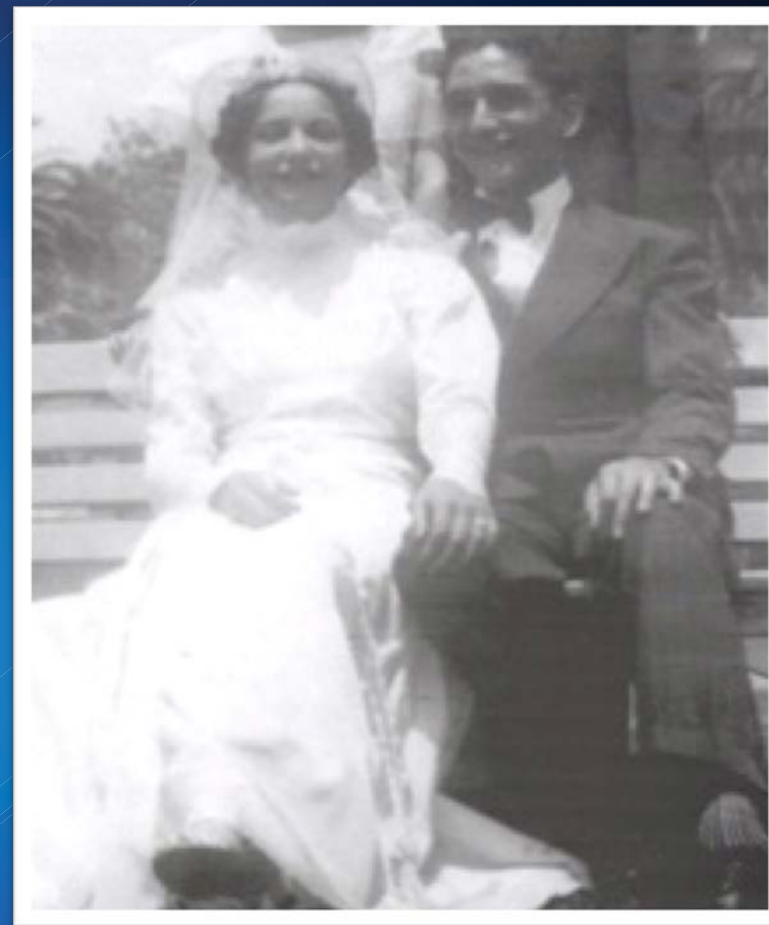




Helen Tapia Sanchez

“Rosie Riveter”

Worked at Lockheed Plant
Los Angeles, CA



Helen Sanchez with husband, John E. Sanchez,
U.S. Navy Seabees



Genevieve Zaragoza Vilaubi

“ROSIE RIVETER”

at Lockheed Plant, Santa Fe & 7th ST.,

Los Angeles, CA

Worked on P-38s



Other “Rosie Riveters”

Pearl Vega Jauregui	Made Parts For P-38 Fighter Planes	Mercy Morales	Sally Ferrer
Edna Gutierrez Pollerana	Made Rocket Parts At Northrop Plant	Carmen Rodriguez	
Blanch Aguirre Zavala	Douglas Aircraft Long Beach, CA	Lupe Rodriguez	Clotilde Marrufo Aguilera
Suzanne Valenzuela	Consolidate Vultee		
Jesi Castillo Manriquez			